

Oh, the Lord Looked Down

Words: Trad.

Music: Nicholas M Brown

Allegretto

mp

4 **Solo Bass** *mf*

1. Oh, the Lord looked down_ from his win- dow in the sky, Said
2. The Lord said: "Noah,_ there's going to be a flood. There's
3. The ark rose up___ on the bo- som of the deep,_____

3

7

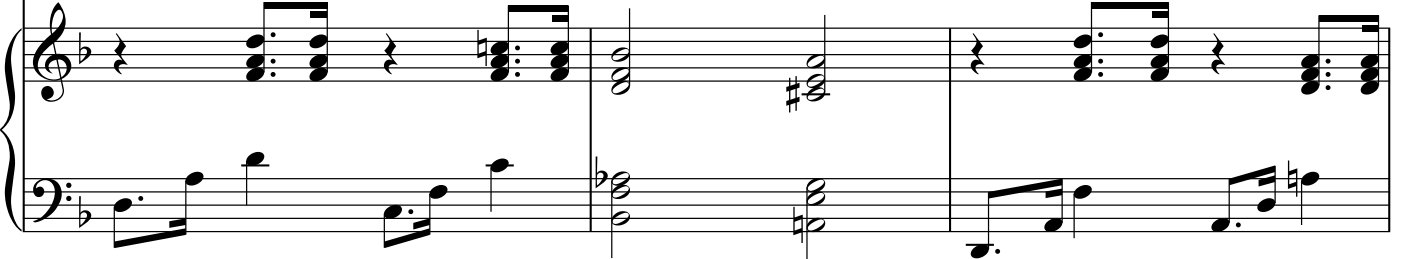
"I cre - a - ted man, but I can't re- mem - ber why!
going to be some wa - ter, there's going to be some mud, So
Af - ter for - ty days Mis - ter Noah_____ took a peep. He said:

3

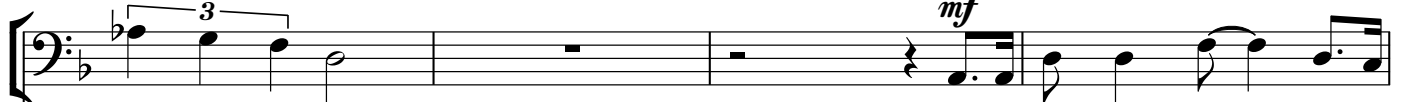
9



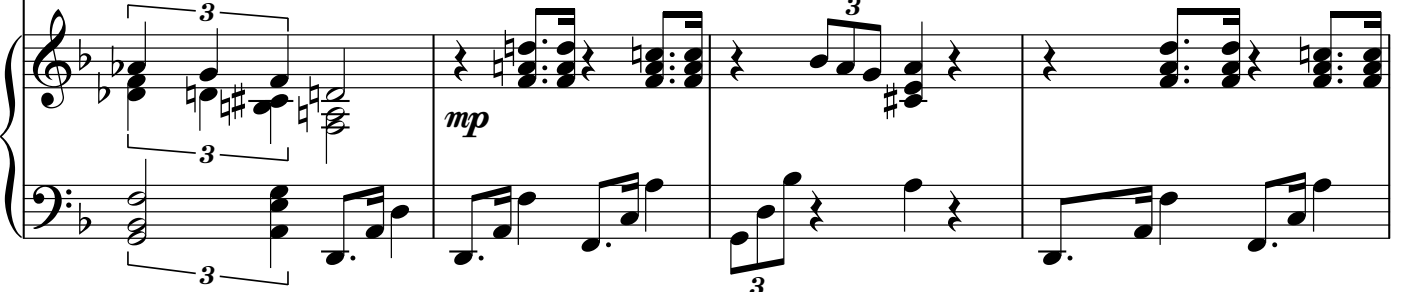
No - thing but fight - ing since cre - a - tion day. I'll send a lit - tle wa - ter and I'll
 take off your hat, _____ Noah, take off your coat, Get Shem, Ham and Ja - pheth and
 "We're not mo - ving, Lord, where are we at?" The Lord said: "You're sit - ting on



12



wash them a - away. Oh the Lord came down and He
 build you a boat." Noah said: "Lord, it's
 Mount A - ra - rat." Noad said: "Lord, it's



16



looked a - round a spell. There was Mis - ter Noah be - hav - ing migh - ty well. And
 get - ting migh - ty dark." The Lord said: "Noah get those crea - tures in the ark."
 get - ting nice and dry." The Lord said: "Noah see my rain - bow in the sky."



19

that is the rea - son the Scrip - tures re - cord
 Noah said: "Lord, it's be - gin - ning to pour." The
 Take all your crea - tures and peo - ple the earth, And be

21

No - ah found grace in the eyes of the Lord.
 Lord said: "Noah, hur - ry up and close the door."
 sure that you're not more trouble than you're worth."

1.2.

23 *f* Sopranos (verses 1 and 2)

No - ah found grace in the eyes of the Lord, No - ah found grace in the

f Altos (verse 2 only)

No - ah found grace, No - ah found

f Chorus basses

No - ah found grace in the eyes of the Lord, No - ah found grace in the

1.2.

26

eyes of the Lord, No-ah found grace in the eyes of the Lord, And he left them high and dry.

grace, No-ah found grace in the eyes of the Lord, And he left them high and dry.

eyes of the Lord, No-ah found grace in the eyes of the Lord, And he left them high and dry.

The piano accompaniment consists of a right-hand part with chords and a left-hand part with a melodic line. A triplet of eighth notes is marked in measures 27 and 28.

30

f 3. Soprano descant
No - ah found grace in the eyes of the Lord,

f Chorus sopranos
No - ah found grace in the eyes of the Lord,

f Altos
No - ah found grace,

f Chorus basses
No - ah found grace in the eyes of the Lord,

The piano accompaniment continues with a right-hand part of chords and a left-hand part of a melodic line. A triplet of eighth notes is marked in measure 31.

33

No - ah found grace in the eyes of the Lord, No - ah found grace in the
No - ah found grace in the eyes of the Lord, No - ah found grace in the
No - ah found grace, No - ah found grace in the
No - ah found grace in the eyes of the Lord, No - ah found grace in the

36

eyes of the Lord, And he left them, left them, left them high_____ and

eyes of the Lord, And he left them, left them, left them high_____ and

eyes of the Lord, And he left them, left them, left them high_____ and

eyes of the Lord, And he left them, left them, left them high_____ and

Detailed description: This block contains four vocal staves. Each staff begins with a treble clef and a key signature of one flat (B-flat). The first three staves have a '3' over the first three notes, indicating a triplet. The fourth staff has a '3' over the first three notes and a 'p cresc.' marking. The lyrics are: 'eyes of the Lord, And he left them, left them, left them high_____ and'. The music features a melodic line with a long note on 'high' and a final note on 'and'.

p cresc.

Detailed description: This block contains two piano accompaniment staves. The upper staff is in treble clef and the lower staff is in bass clef. Both have a key signature of one flat. The music consists of chords and moving lines. A 'p cresc.' marking is present in the upper staff. The piece concludes with a final chord in the upper staff and a final note in the lower staff.

39

Four vocal staves, each starting with a treble clef, a key signature of one flat (B-flat), and a dynamic marking of *f*. Each staff contains a single half note followed by a fermata. Below each staff is the lyric "dry." followed by a horizontal line.

Piano accompaniment consisting of two staves. The upper staff is in treble clef and features a series of triplets of eighth notes, marked with a dynamic of *f* and the number "3". The lower staff is in bass clef and contains a long, sustained note with a fermata, followed by a few chords. A large slur spans across both staves.